

Introduction

The MAGPiX B350 is a digital camera with a specially designed 5x telescopic lens. Combined with its very high-speed shutter, the MAGPiX B350 produces amazing freeze-frame action pictures.

These images can be downloaded and viewed on your personal computer through the USB port after installing the software included in this package. To get the most out of your camera, please read this manual carefully.

This manual is divided into seven parts:

- A. Getting To Know Your Camera**
- B. Using Your Camera**
- C. Camera Modes and Settings**
- D. Viewfinding and Taking Better Picture Tips**
- E. Downloading Your Pictures To Your PC**
- F. Technical Specifications**
- G. Troubleshooting and Frequently Asked Questions**

A. Getting To Know Your Camera

Below are three views of the MAGPiX B350 to help familiarize you with your new camera. The parts and corresponding numbers will be referred to throughout this manual.

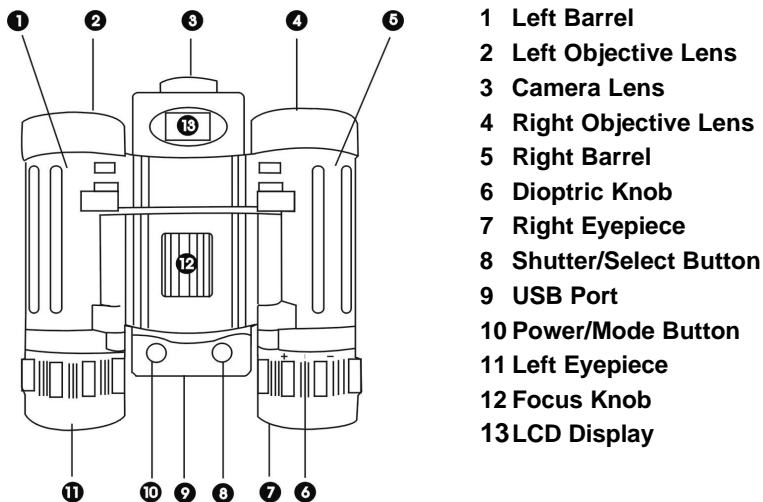


Figure 1. Top View

- 8 Shutter/Select Button**
- 9 USB Port**
- 10 Power/Mode Button**

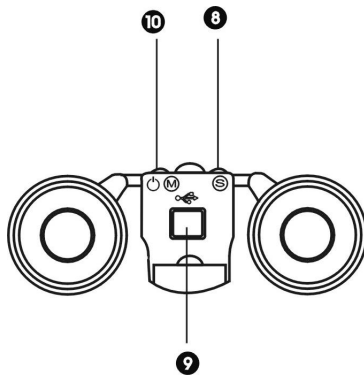


Figure 2. Front View

- 14 Camera Lens**
- 15 Eyepieces**
- 16 Battery Compartment**
- 17 Tripod Mount**

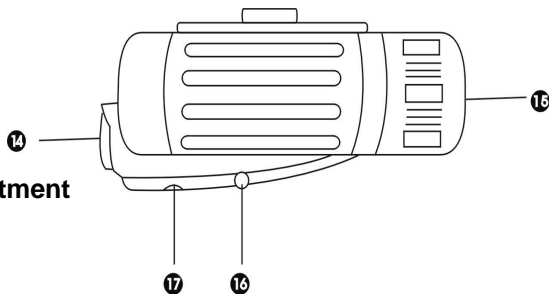


Figure 3. Side View

B. Using Your Camera

1. Load The Batteries. Open the Battery Compartment (16) and insert two AAA batteries (included), paying attention to insert them in the correct direction. Close the compartment.

Always download your pictures regularly (see Part E), if the batteries run out, your pictures will be lost. **A flashing LCD indicates the batteries are low.** You should download your pictures as soon as possible.

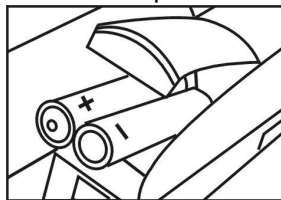


Figure 5. Loading The Batteries

2. Turn On Your Digital Camera. Press Power/Mode Button (10) to turn on the camera. The preset mode of high resolution (HI) allows 52 VGA images and is indicated by a 3-star symbol on the LCD Display (13).

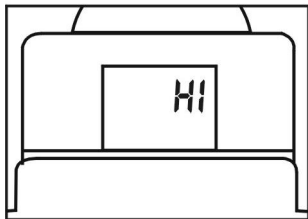


Figure 6. High Resolution

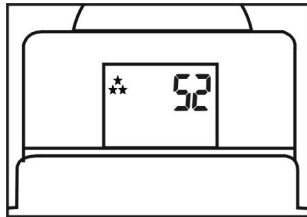


Figure 7. Pictures Remaining

3. Use The Eyepieces (7 & 11) To Aim Your Camera. The camera works best at taking pictures of outdoor objects, 40ft away from you or more. Also, since the camera is point and shoot and independent from the binoculars, you do not need to focus the binoculars to get great in-focus pictures.

4. Take Your Picture. Hold your MAGPiX B350 steady and aim at a scene or object 40ft. or greater away from you. Press the Shutter/Selection Button (8) to take the picture. You will hear a beep. The LCD Display (13) will show “- - -”, and when the number of available exposures has decreased by one on the LCD Display (13), you will hear another ‘beep’, and the camera is ready to take another picture. If you hear a quick ‘double beep’ and the counter does not go down, it means that there was not enough light for the camera to take a picture.

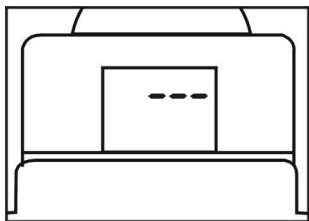


Figure 8. Shooting Symbol

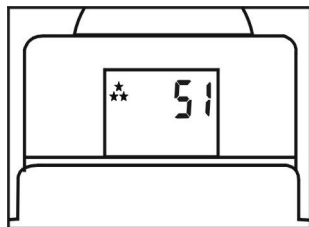


Figure 9. LCD Display After First Exposure

5. Turn off Your Camera. Press the Power/Mode Button (10) once and the LCD Display (13) will show “oFF”. - Then press the Shutter/Select Button (8) to turn off the camera. The camera will also automatically shut off after approximately 1minute of inactivity.

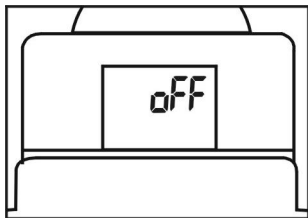


Figure 10. Off Mode

C. Camera Modes and Settings

Different camera modes and settings can be cycled through by pressing the Power/Mode Button (10) after the camera is turned on. ***** It is important to wait 1 second before each press of the Power/Mode Button. *****

1. Off Mode
2. Self-timer
3. Erase All Pictures
4. Erase Last Picture
5. Resolution Selection

1. Off Mode

When the camera is turned on, pressing the Power/Mode Button (10) once, will cause “oFF” to show on the LCD Display (13). Then press the Shutter/ Select Button (8) and the camera will turn off.

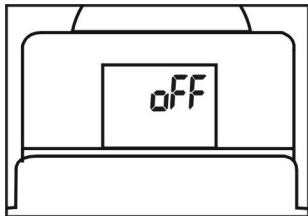


Figure 11. Off Mode

2. Self-Timer Mode

When the camera is turned on, pressing the Power/Mode Button (10) two times, **waiting one second between each press of the button** - will put the camera in the Self-Timer Mode. When you see the timer icon, press the Shutter/Select Button (8) to activate the self-timer. The camera will beep for 10 seconds before taking the picture automatically. When LCD Display (13) no longer shows “- - -”, the camera is ready to take another picture.

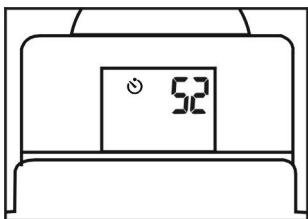


Figure 12. High Resolution + Self-timer

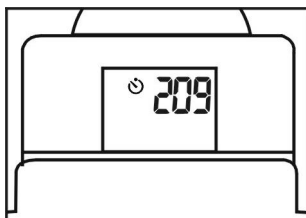


Figure 13. Low Resolution + Self-timer

3. Erase All Pictures

When the camera is turned on, pressing the Power/Mode Button (10) three times, **waiting one second between each press of the button** - will put the camera in Erase All Pictures Mode. When you see the Erase All Pictures icon, press the Shutter/Select Button (8) and the LCD will begin to blink. While the LCD is blinking press the Shutter/Select Button (8) again, and the camera will erase all pictures that have been taken.

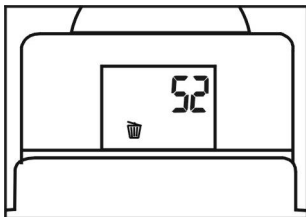


Figure 14. Erase All Pictures

4. Erase Last Picture

When the camera is turned on, by pressing the Power/Mode Button (10) four times, **waiting one second between each press of the button** - will put the camera in Erase Last Pictures Mode. When you see the Erase Last Pictures icon, press the Shutter/Select Button (8) to erase the last picture. The number of available pictures on the LCD Display (13) will be increased by one.

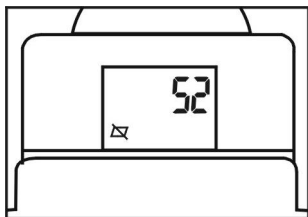


Figure 15. Erase Last Picture

5. Resolution Selection

When the camera is turned on, pressing the Power/Mode Button (10) five times, **waiting one second between each press of the button** - will put the camera in Resolution Selection Mode. When you see the Resolution Icon, press the Shutter/Select Button (8) to change the preset high resolution (52 VGA images of 640 x 480 pixels) to low resolution (209 QVGA images of 320 x 240 pixels).

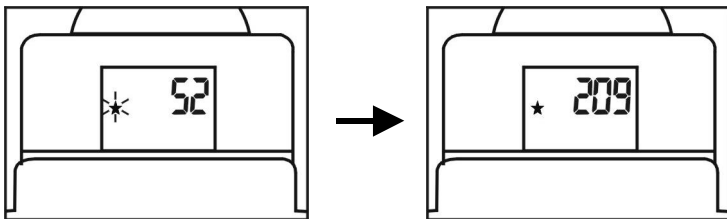
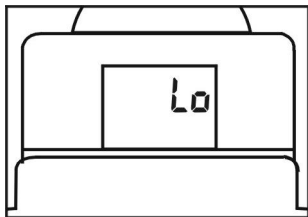


Figure 16. Changing Between High Resolution and Low Resolution



If you change the resolution to low, the LCD Display (13) will show the following when you turn on your digital camera again. To change the resolution back to high - follow the steps above one more time.

Figure 17. Low Resolution

D. Viewfinding and Taking Better Picture Tips

How to use the binoculars:

1. Hold the MAGPiX B350 in a comfortable viewing position, and adjust the left and right barrels (1 & 5) apart or together until one single circular field is seen with both of your eyes at the same time.
2. To adjust the focus, look into the Left Eyepiece (11) with your left eye (with the right eye closed) to aim at any object 5 meters away, rotate the Focus Knob (12) clockwise or anti-clockwise to get the best focus. Then look into the Right Eyepiece (7) with your right eye (with the left eye closed), and rotate the Dioptric Knob (6) to the left or to the right to get the best focus.
3. Now you can look with both eyes into the left and right eyepieces (2 & 4) and bring nearby or far away objects into focus by adjusting the Focus Knob (12).

Viewfinding

- The function of the binocular is as the viewfinder for the binoculars.
- The area seen through the binocular is a circular area, approximately 8 times the magnification of original image.
- The MAGPiX B350 lens produces a 5 times enlarged image with 4x3 standard shape.

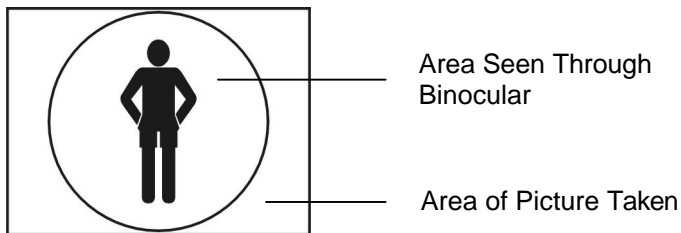


Figure 17. View area difference between binocular and camera

- You do not need to focus the binoculars for a focused picture. The camera is auto-focus and is independent from the binoculars.

- Depending upon the amount of available light, the shutter speed is fast enough that you can capture terrific action shots.
- Try taking a picture of a helicopter in flight. You'll notice that when you view your picture, you will have stopped the helicopter's rotor blade in mid-flight.

E. Downloading Your Pictures To Your PC

1. Install the drivers and photo software. The CD included in the box contains the MAGPiX B350 driver and bonus software (Photo Express 4.0). **The driver must be installed before you connect the MAGPiX B350 to your computer.** Ulead PhotoExpress is bonus software, and is not necessary to view your pictures.

Insert the installation CD into the CD-ROM drive of your computer. A screen will appear as shown in Figure 18.



Figure 18. B350 CD start-up screen

Click once on “Install MAGPiX B350 Driver” to start the installation of the driver, and follow the instructions on the screen step by step. After the installation is completed, select “Restart your computer now”. (Go directly to step 2, if you do not want to install PhotoExpress on your computer).

After your computer restarts, re-insert the MAGPiX B350 CD and click once on “Install Ulead Photo Express 4.0” to install Photo Express. Follow the instructions on the screen step by step. After the installation is completed, exit the installation screen and **restart your computer**.

2. Connect your MAGPiX B350 to your computer. Plug in the large end of the included USB cable to the USB port of your computer, and connect the smaller end of this cable to the MAGPiX B350. Your computer will find new hardware and update its system. Follow the onscreen instructions, if any.

3. Downloading your pictures from the MAGPiX B350.

By using the MAGPiX Quick Download Utility:

1. Make sure the MAGPiX B350 is connected with the USB cable to your computer.
2. Launch the MAGPiX B350 by going to: Start→ Programs→ MAGPiX B350→ MAGPiX B350. (See Figure 19).



Figure 19. MAGPiX Quick Download Utility

3. Click on the Red/Pink camera icon to download images from the camera.
4. The thumbnail images can be enlarged by clicking on them with your right mouse button. Select the photos you want to save and click on the save icon and click “Save”.
5. After the pictures are downloaded, you may delete the pictures from your MAGPiX B350 by following the directions on page 8 of this manual.
6. You can now open your saved photos with your favorite photo applications.

By using Ulead PhotoExpress:

1. Make sure the MAGPiX B350 is connected with the USB cable to your computer.
2. Launch the PhotoExpress 4.0 application.
3. Along the left hand side of the application, select the folder that you like to download your pictures to.
4. Click on “Get Photos” and select “Digital Camera” from the drop down menu, as shown in Figure 20.
5. Make sure “MAGPiX B350 “ is selected along the left hand side of the application under “Select Data Source”
6. Click “Acquire” at the bottom left of the screen to download your pictures in the camera. See Figure 21.
7. After the pictures are acquired, you may delete the

pictures from your MAGPiX B350 by following the directions on page 8 of this manual.

8. Ulead PhotoExpress 4.0 offers many more functionalities as an image-editing program. To learn how to use PhotoExpress 4.0, please insert the CD that came with the B350 and select “Ulead PhotoExpress 4.0 User Manual”, or visit www.ulead.com on the Internet.

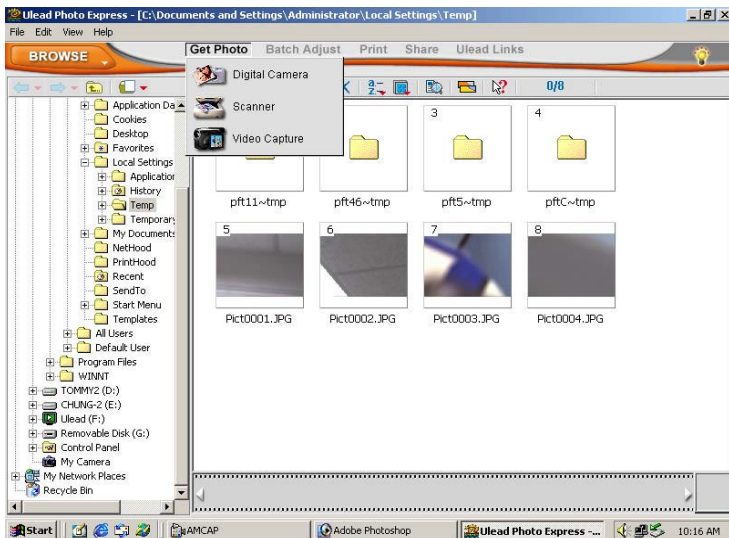


Figure 20. Click “Get Photos” and select “Digital Camera”

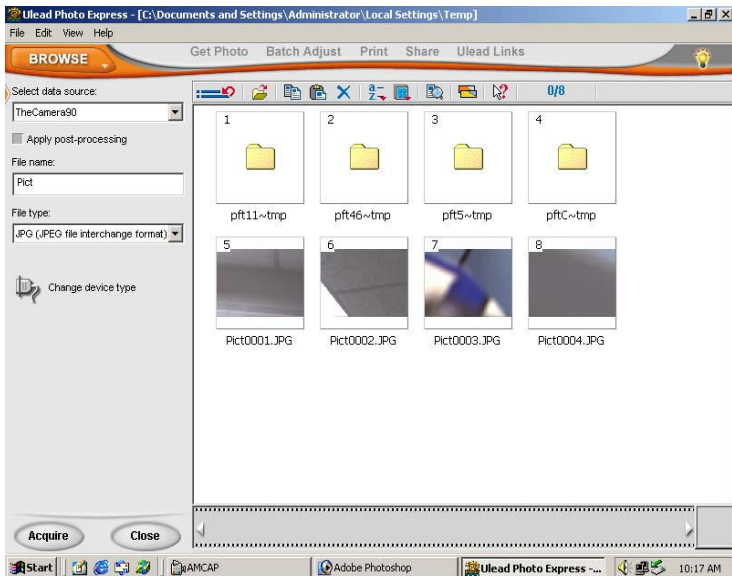


Figure 21. Click ‘Acquire’ at the bottom left of the screen

F. Technical Specifications

- Sensor Resolution: CMOS, 640x480 pixels
- Built-in Memory: 8 MB, SDRAM
- Image Storage: VGA (640x480) - 52 images
QVGA (320x240) - 209 images
- Status LCD: 3-digit B/W
- White Balance: Auto
- Exposure: Auto
- Shutter Speed: Auto (1/8000 sec, Max.)
- Focal Length: 33 mm (equals to 230 mm of 35 mm camera)
- Aperture: F=4
- Self Timer: 10 seconds
- Interface: USB
- Delete Image: All / last one
- Auto Power Off: 45 seconds
- Battery: 2 x AAA Alkaline Battery
- Dimensions: 115x90x55 mm
- Weight: 225 grams (w/o battery)
- Operating System: Windows 98SE/ME/2000/XP
- Viewfinder: Full functioned 8x21 binocular

System Requirements

- Personal computer with an operating system of either Windows 98, 98SE, ME, 2000 or XP.
- A CD-ROM to install the driver and application software.
- Minimum Pentium II 200 MHz CPU.
- 1 USB port available.
- VGA Video card able to support a minimum of 640 x 480 24-bit true color resolution. 1024 x 768 24-bit true color resolution is recommended.
- At least 48 MB RAM for WIN98/ME, and 64 MB RAM for Windows 2000 and WIN XP.
- At least 120 MB of free hard disk space.

F. Troubleshooting and Frequently Asked Questions

Q. The pictures I take seem to be blurred or out of focus.

A. Try taking pictures of objects or activities 40ft. or further away. Remember, the B350's lens is focused from 40ft to infinity.

Q. I can't get the B350 to delete my pictures or change to any other mode but 'OFF'.

A. When you press the mode button, you need to wait 1 second before pressing it again. So, when pressing the mode button 3 times to get to the trash icon, you need to wait one second between each press of the mode button. Then, when you see the trash icon, press the shutter button once and the number of pictures will start to blink. While the LCD is blinking, press the shutter button again and the number of pictures remaining will go back to '52'.

Q. I downloaded my pictures to the computer, but the B350 LCD still shows the same number of pictures taken that I had before I downloaded them – why haven't they been deleted?

A. The B350 does not automatically delete your pictures off of the camera after you have downloaded them to your computer. To take new pictures, you must delete your old pictures by following the instruction on page 8.

Q. How do I learn to use the other functions in Photo Express 4.0?

A. You can insert the CD that is included with the B350 and select “Ulead Photo Express 4.0 User Manual” from the menu to read the manual for Photo Express 4.0. You can also visit Ulead’s website at www.ulead.com.

Q. The pictures I downloaded have some purple artifacts or seem to be distorted or have some black spots and lines on them.

A. Try reconnecting the USB cable to the computer and to the B350. Make sure the USB cable is securely inserted into both your computer and the B350.

Q. The pictures I took have a strong red tint when they are downloaded.

A. The B350 is functioning normally. In very limited computer systems with Windows XP, pictures taken indoors under incandescent lighting may appear red. Pictures taken outdoors or under natural lighting are not affected. This phenomenon does not occur under Windows 98se, Me or 2000. Please visit our web site at www.magpix.com for a special Windows XP driver. **You do not need a different driver, unless you are experiencing a strong red tint.**

Q. My batteries are low, but I can't get to my computer to download my pictures. I don't want to lose my pictures.

A. Turn off the B350 (The LCD should be blank). Then open battery compartment and replace your old batteries with new batteries. The B350 will keep your pictures for approximately 1 minute while you are changing the batteries.

Q. None of the buttons seem to work. The LCD displays only "HI" and never shows the number of pictures remaining.

A. A system error has occurred. Please take out the batteries for 2 minutes and re-insert them. Unfortunately, all pictures taken with the B350 that have not been downloaded to your computer will be lost.

Q. I inserted the CD, but no menu appears automatically.

A. Go to "My Computer" and right click on your CD drive. Then select "AutoPlay" or "AutoRun". The menu should now appear. If you do not have an option for "AutoPlay/AutoRun, select 'open'. Then double click on the 'Drivers' folder. Inside the drivers folder, is the driver for the MAGPIX B350. Double click on that file and the driver will install automatically.

Q. I changed the resolution from Hi to Lo. How do I change the resolution back from Lo to Hi.

A. Follow the same steps you used to change the resolution from Hi to Lo and your camera will be back in Hi resolution mode.

Q. Every time I try to take a picture, I hear a double beep and the counter does not go down. Why is my camera not taking a picture?

A. If you hear a quick 'double beep' and the counter does not go down, it means that there was not enough light for the camera to take a picture. Please try to take a picture when there is more light available. The MAGPIX B350 works best outdoors during daylight.

Q. When I try to install Ulead PhotoExpress, it keeps asking me for a serial number – Where do I find it?

A. You do not need a serial number to install Ulead PhotoExpress. Just make sure that you fill in the 'Name' box *and* the 'Company' box. Filling in 'home' or 'none' are good responses if the B350 is not being used for a business. After filling in these two lines you should be able to continue the installation.

Q. I've taken pictures and installed the driver, but when I try to download my pictures, I get a **'There is a Connection Error'** message or a **'No Photos in Camera'** message.

A. Please make sure that you have pictures in the camera. The LCD should show a number less than '52'. If the LCD shows '52', please take a picture and try to download the pictures again before proceeding with these instructions. Also, please make sure the USB cable is tightly connected. You may also get this message if the B350's driver did not install properly. **Please follow the directions below according to the operating system you have on your computer.**

*****(If you are using Windows 98 it is important to distinguish between Windows 98 and Windows 98 Second Edition. Here's how to tell: Go to your CONTROL PANEL and click on SYSTEM. In the window that opens, you will see either just 'Windows 98' or you will see 'Windows 98 Second Edition'.)**

*****Windows 98 Second Edition / ME / 2000 / XP**

1. It is very important that you first restart your computer.
2. Connect the B350 to the computer.
3. - If you have Windows 98SE or ME, go to the 'Control Panel' and then double click on 'System'. Then click on the 'Device Manager' tab.

- If you have Windows 2000, right-click on the 'My Computer' icon located on your desktop, and then select 'Properties' from the menu that will appear. Click on the 'Hardware' tab and then click on the 'Device Manager' button.
 - If you have Windows XP, go to Start → Right-click on 'My Computer' and select 'Properties' from the dropdown menu. Then click on the 'Hardware' tab and click on the 'Device Manager' button.
4. If you see a yellow '?' next to "Other Devices" and "?! USB DIGITAL STILL CAMERA". --> Right click on "?! USB DIGITAL STILL CAMERA" and select 'remove' or 'uninstall' from the menu. Confirm the removal. (Otherwise go to step 5).
 5. If the 'Imaging Devices' line is present, double click on it. If you see 'Dual mode DSC (2770)' or 'SQ (9120)' right click on it and select 'remove' or 'uninstall'. Confirm the removal or un-installation. (Otherwise go to step 6).
 6. Close the 'System Properties' Window. Do not restart the computer
 7. Go to your Control Panel and double click on Add/Remove Programs
 8. Highlight 'MAGPIX B350' and click Add/Remove (or Change/Remove). Confirm the removal of the program. Do not restart the computer
 9. Highlight 'Ulead Photoexpress 4.0 My Custom Edition' and click Add/Remove (or Change/Remove). Confirm the removal of the program. (If you cannot find this program, go to step 10).

10. Unplug the camera from the computer. Restart the computer
11. Insert the MAGPIX B350 installation CD (DO NOT CONNECT THE B350 TO THE COMPUTER). Click once on 'Install MAGPIX B350 Driver'
12. Restart the computer
13. Connect the camera into the computer. Wait 45 seconds. Windows should find new hardware. (If Windows does not find new hardware after 45 seconds, try switching the USB cable to another USB port.)
14. When Windows has finished installing the new hardware (Dual mode DSC (2770)), please wait 2 minutes and then restart the computer.
15. Disconnect the B350 from your computer.
16. Insert the MAGPIX B350 installation CD and click on 'Install Ulead Photoexpress 4.0' and complete the installation. Restart your computer.
17. Download your photos as described in the B350 user manual using either the MAGPIX Quick Download Utility or Ulead PhotoExpress.

*****Windows 98**

1. Disconnect the B350 from USB port of PC. Restart your computer.
2. If you installed Ulead PhotoExpress, go to Start--> Settings --> Control Panel --> Double click on Add/Remove Programs (If you did not install PhotoExpress, go to step 4).

3. Highlight Ulead Photoexpress 4.0 My Custom Edition on the list and click Add/Remove - and confirm complete removal of Ulead Photoexpress.
4. Insert the installation CD in to the CD-ROM drive. Click "Exit" when the installation menu appears. Go to "My Computer" and right-click on your CD drive and click "Open". Double click on the folder 'OTHER' and double-click on the folder 'DIRECTX8.0'. Then double click on 'SETUP.EXE' and Microsoft's DirectX will install automatically.

If you prefer, you may also download and install DirectX 8.0 from Microsoft on the Internet at:

<http://www.microsoft.com/downloads/release.asp?ReleaseID=27741>

5. Restart your computer.
6. Insert the B350 installation CD. When the menu appears, go to the next step.
7. Click "Install MAGPiX B350 Driver ", and complete the installation. Click "Finish". (If a "Welcome" window displays, select "Repair" and click "Next".)
8. When "InstallShield Wizard Complete" displays, select "Yes" and click "Finish" to restart system.
9. Connect the B350 with USB port of your PC. Wait 45 seconds. Windows should build a new driver database.
10. Go to Start--> Programs -->Magpix B350 --> Magpix B350. When the window opens, click on the red camera icon to download your photos. To save the pictures you've just downloaded, click on the disk icon. To enlarge the pictures,

right-click on the picture you wish to enlarge.

11. If you are satisfied with this download, you can also download the pictures using Ulead PhotoExpress. Please follow the installation procedures for PhotoExpress on page 15.

Q. Where can I find more help or information on my MAGPIX B350?

A. www.magpix.com